



NACE
INTERNATIONAL

PITTSBURGH
SECTION

**PITTSBURGH SECTION
2009-2010 OFFICERS**

ROMAN PANKIW
Trustee
Duraloy Technologies Inc.
120 Bridge Street
Scottsdale PA 15683-0081
Tel: 724.887.5100
Fax: 724.887.5224
techmgr@duraloy.com

GEOFF RHODES
Chairman
Matco Services, Inc.
4640 Campbells Run Road
Pittsburgh PA 15205
Tel: 412.489.1320
Fax: 412.489.1323
go.rhodes@matcoinc.com

WALT MOORHEAD
Vice Chairman
Product Evaluation Systems, Inc.
637 Donohoe Road
Latrobe PA 15650
Tel: 724.834.8848
Fax: 724.834.9151
walt@productevaluationsystems.com

RAYMOND MILLER
Secretary Treasurer
IPSCO Koppel Tubulars Corp
P.O. Box 750
Beaver Falls PA 15010
Tel: 724.847.6265
Fax: 724.847.6255
rmiller@tmk-ipsco.com

RICHARD "DICKEY" SCOTT
Publicity Chairman
Corpro Companies, Inc.
1380 Enterprise Drive
West Chester PA 19380
Tel: 610.344.7002x258
Fax: 610.344.7092
rscott@corpro.com

DON VOKE
Membership Chairman
Duraloy Technologies Inc.
120 Bridge Street
Scottsdale PA 15683-0081
Tel: 724.887.5100
Fax: 724.887.5224
dvoke@duraloy.com

LUIS GRANES
Past Chairman
Sauereisen Inc.
160 Gamma Drive
Pittsburgh PA 15238-2989
Tel: 412.963.0303
Fax: 412.963.7620
LFGranes@Sauereisen.com

HENRY KEMP
E.A.C. Treasurer
Duraloy Technologies Inc.
120 Bridge Street
Scottsdale PA 15683-0081
Tel: 724.887.5100
Fax: 724.887.5224
hkemp@duraloy.com

SECTION WEBSITE
<http://www.naceph.org/>

*Please note the attached
Announcements
for BOTH*

***NACE Pittsburgh Section Annual
Awards Banquet***

***Wednesday June 9, 5:30 PM
Ichiban Hibachi Steakhouse & Sushi Bar
Cranberry Township PA***

and

Annual Jungle Out

***Thursday June 10, 9:00 AM
Pittsburgh North Golf Course
Gibsonia PA***



NACE Pittsburgh Section Annual Awards Banquet

Please come and join the officers and members of the NACE Pittsburgh Section for an evening of fine food and conversation at the section's annual Awards Dinner and Election of New Officers. As always, guests are welcome.

*Ichiban Hibachi Steakhouse & Sushi Bar
Village Shoppes*

*20510 Route 19 North, Suite 111
Cranberry Township PA
724)779-2223*

Wednesday June 9, 2010

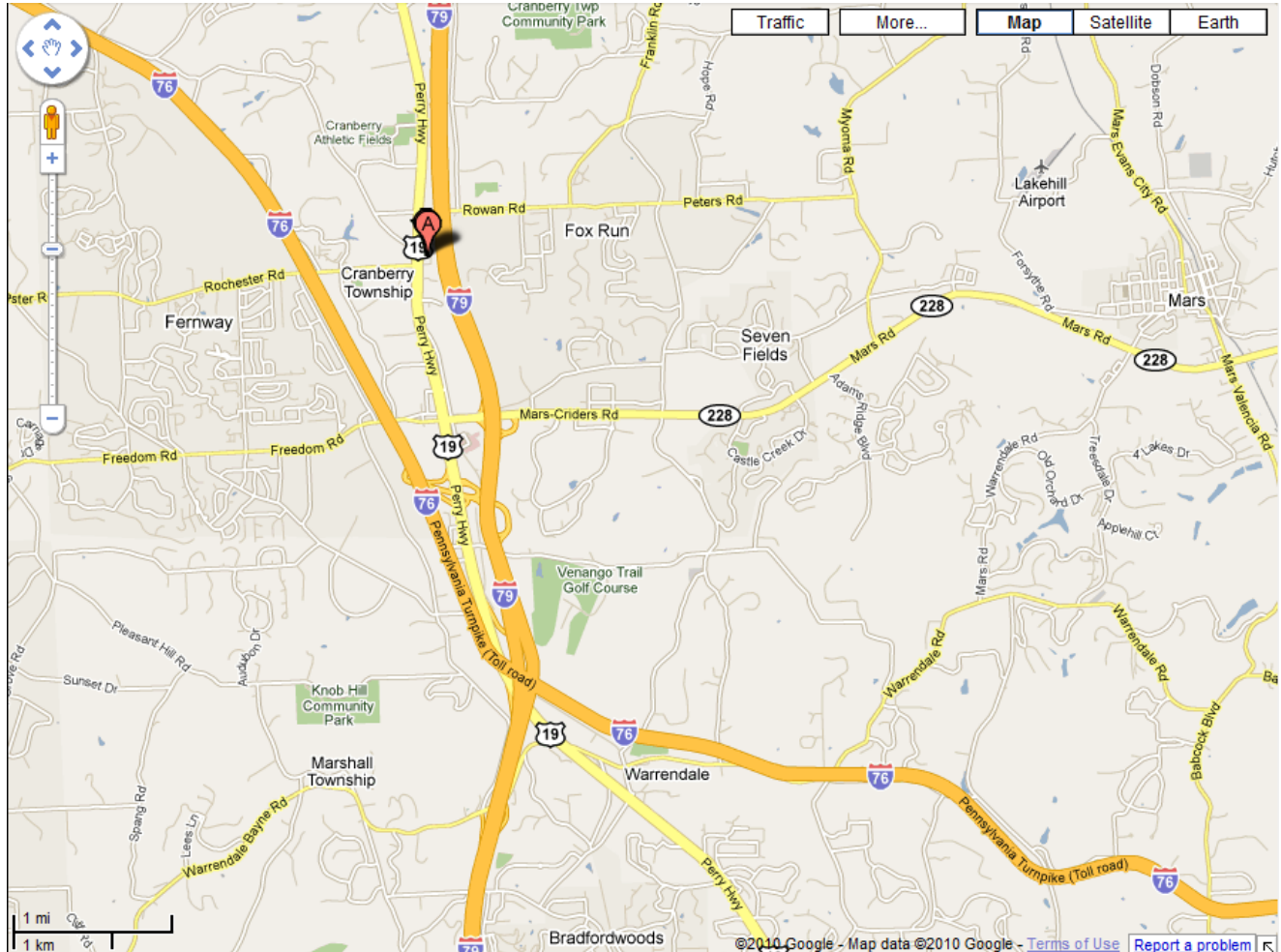
*Social Hour at 5:30 PM - Dinner at 6:30 PM
Followed by Awards and Recognition*

Table-side Hibachi with your choice of seafood, steak or chicken, plus salad, soup, vegetables, and dessert.

\$22/each – Reservations Requested

**Please contact the Engineers' Society:
(412)261-0710 by Monday 6/7, 3:00 PM.**

See next page for directions



- Exit PA Turnpike (Exit 28) or I-79 (Exits 76 or 78 coming North, Exit 78 coming south) in Cranberry Township and get onto Rt. 19 North
- **Ichiban** is located in the Village Shoppes @1 mile north of Rt. 228 on Rt. 19 North, and is on the Right side of the road. Enter across from the Rochester Road intersection and traffic light.



NACE
INTERNATIONAL

PITTSBURGH
SECTION

**Western Pennsylvania / NACE Pittsburgh Section
Corrosion Control Committee Meeting
And 2010 Annual Jungle Out**

WHEN: Thursday, June 10
9:00 AM – Business Mtg.
9:30 AM - Shotgun Start

WHERE: Pittsburgh North Golf Course
3800 Bakerstown Road
Bakerstown, PA 15007
(724) 443-3800

FORMAT:
18 Hole Scramble
Skill Prizes
Team Prizes

COST WITH CART:
\$31 per person for dinner (No cost for retirees)
and/or
\$30 per person for 18 holes of golf

Hot dog and beverage at turn (Cash)

Beer cart on course– Sponsored by Mike Tallant, Chuck Kastor and Bob Scullion
3:00 PM – Steak Dinner, Awards and Door Prizes at the pavilion.

NAMES OF FOURSOME:

- | | |
|----------|----------|
| 1. _____ | 2. _____ |
| 3. _____ | 4. _____ |

IMPORTANT NOTICE:

If you plan to participate in the golf outing, please complete and return this form to:

corrosion@twphillips.com or, fax to: 724-287-5537

Mail dinner payments to: Lori Byrge, 636 Elliot Drive, McKees Rocks, PA 15136

Please respond before June 3, 2010.

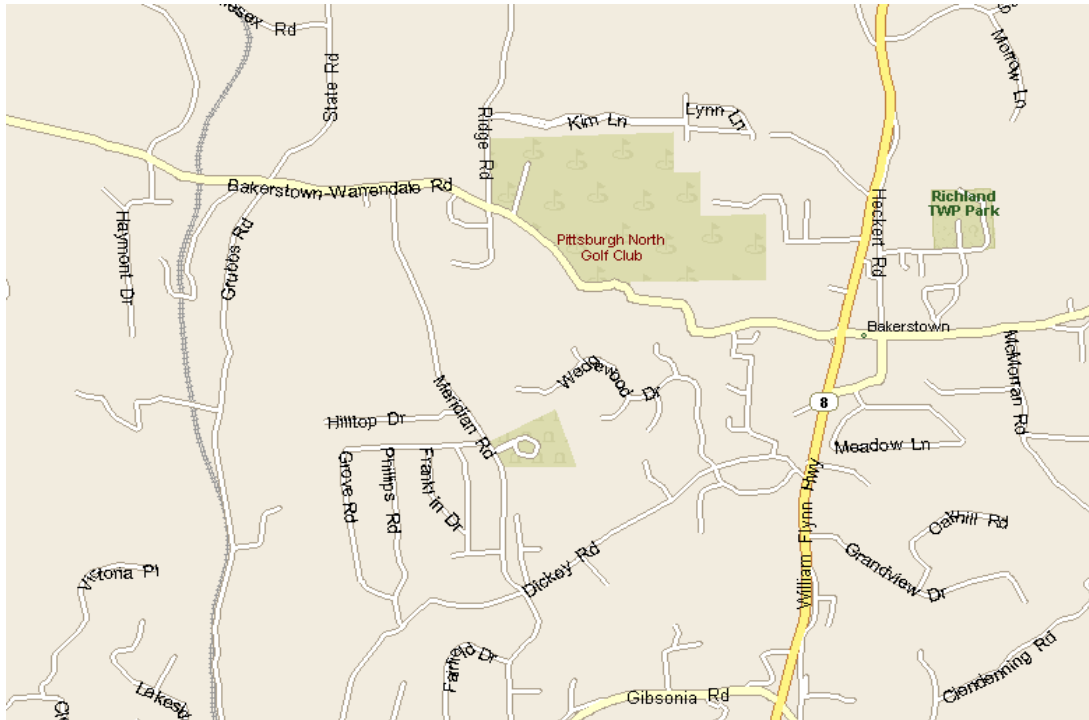
Also on the web at: www.wpaccc.org or www.nacepgh.org

Everyone Welcome and looking forward to new participants!



NACE
INTERNATIONAL

**PITTSBURGH
SECTION**



DEAR VENDOR

AS SECRETARY TO THE WESTERN PENNSYLVANIA CORROSION CONTROL COMMITTEE, I AM SENDING THIS ANNUAL REQUEST FOR YOUR PARTICIPATION IN THE UPCOMING ANNUAL JUNGLE OUT (GOLF OUTING) TO BE HELD AT PITTSBURGH NORTH GOLF COURSE ON JUNE 10, 2010. WE ARE COMING TO YOU AGAIN, TO ASK FOR YOUR HELP IN MAKING THIS YEAR'S EVENT ANOTHER SUCCESS, AS WE COULD NOT PERFORM OUR TASKS IN THE CORROSION FIELD WITHOUT YOUR COMPANIES' INVOLVEMENT. IF YOU WOULD BE WILLING TO DONATE ANY MERCHANDISE FOR DOOR PRIZES, OR A MONETARY CONTRIBUTION, THE GROUP WOULD GREATLY APPRECIATE YOUR INVOLVEMENT. YOUR DONATION WILL BE ACKNOWLEDGED TO THE MEMBERS AND ATTENDING PARTICIPANTS.

PLEASE SEND ALL MONETARY DONATIONS, MERCHANDISE FOR DOOR PRIZES AND PAYMENTS FOR REGISTERED DINNERS TO:

**LORI BYRGE, SECRETARY WPCCC
636 ELLIOT DRIVE
MCKEES ROCKS, PA 15136**

IF YOU WILL BE BRINGING DOOR PRIZES TO THE EVENT, PLEASE RESPOND BY EMAILING LBYRGE@NISOURCE.COM WITH SPECIFIC ITEMS THAT YOU WILL BE DONATING.

JUNGLE OUT ~ THURSDAY, JUNE 10, 2010



NACE PITTSBURGH SECTION

INTERNATIONAL



121 Sunset Lane
Stahlstown, PA 15687
724/593-2801 • FAX: 724/593-2803
E-mail: jschmucker@carboline.com

JEFF SCHMUCKER
NACE Certified Coating Specialist
Cert. #9882

Cellular: 412/951-7753

www.carboline.com
High Performance Coatings, Linings and Fireproofing

DURALOY TECHNOLOGIES, INC.

<http://www.duraloy.com>



ISO 9001
Registered

Henry W. Kemp
Eastern Regional Sales

120 Bridge Street
Scottsdale, PA 15683-1748
724-887-5100
Fax 724-887-5224
E-mail: hkemp@duraloy.com
Cell: 724-787-3435



Raymond C. Miller
Director-Technical Services
IPSCO Koppel Tubulars Corporation

P.O. Box 750
Beaver Falls, PA 15010
Email: rmiller@tmk-ipsco.com

Phone: 724-847-6265
Fax: 724-847-6255
Cell: 412-580-5719



**LATROBE SPECIALTY
STEEL COMPANY**

Robert F. Buck, PH.D.

Manager - Product and Process Innovation

Latrobe Specialty Steel
2626 Ligonier Street
P.O. Box 31
Latrobe, PA 15650

PHONE 724-532-4778

FAX 724-532-6362

CELL 724-757-7098

LATROBE 800-245-7856

robert.buck@latrobesteel.com

MATCOR

No stronger name in corrosion protection

GEORGE M. KREWSON
Vice President, Northeast Sales

301 Airport Boulevard, Doylestown, PA 18902 USA
215.348.2974 or 800.523.6692 • f 215.348.2699 • c 215.519.2175
gkrewson@matcor.com • www.matcor.com



Failure Analysis & Corrosion Specialists

Geoffrey O. Rhodes
Technical Manager

4640 Campbells Run Road
Pittsburgh, PA 15205
Home Page: www.matcoinc.com
E-mail: go.rhodes@matcoinc.com

Toll Free: (800) 221-9090
Phone: (412) 489-1320
Fax: (412) 788-1283

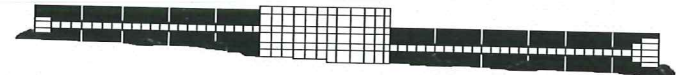
Product Evaluation Systems, Inc.



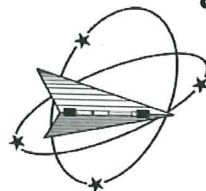
Walter J. Moorhead
President

637 Donohoe Road
P.O. Box 722
Latrobe PA 15650

Phone: 724-834-8848 Cell: 724-493-7502
Fax: 724-834-9151
Email: walt@productevaluationsystems.com

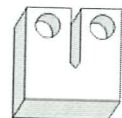


WESTMORELAND MECHANICAL TESTING & RESEARCH, INC.



P.O. Box 388
Youngstown, PA 15696

(724) 537-3131
Fax: 537-3151
www.wmtr.com



WMT&R is a technical leader in the material testing industry.

P.O. Box 218340 ▲ Houston, Texas 77218-8340
Executive Offices: 1440 South Creek Drive ▲ Houston, Texas 77084-4906 ▲ (281) 228-6200
Fax No. (281) 228-6300 - Membership Services Fax No. (281) 228-6329